

The 1998 Face on Mars

by George J. Haas

June 1998 (Revised February 2020)

A New Face

A few hours after releasing the distorted, low contrast image known as the "cat box" to the international media on April 6th 1998, someone at NASA posted a very different image of the MGS "Face" (SP1-22003)¹ on their official web site (Figure 1). This image had the distortion corrected and the contrast enhanced. In the newly rectified image of the "Face" the most startling feature besides the distinguishable eyes, nose, and mouth was the presence of an elaborately styled headdress.

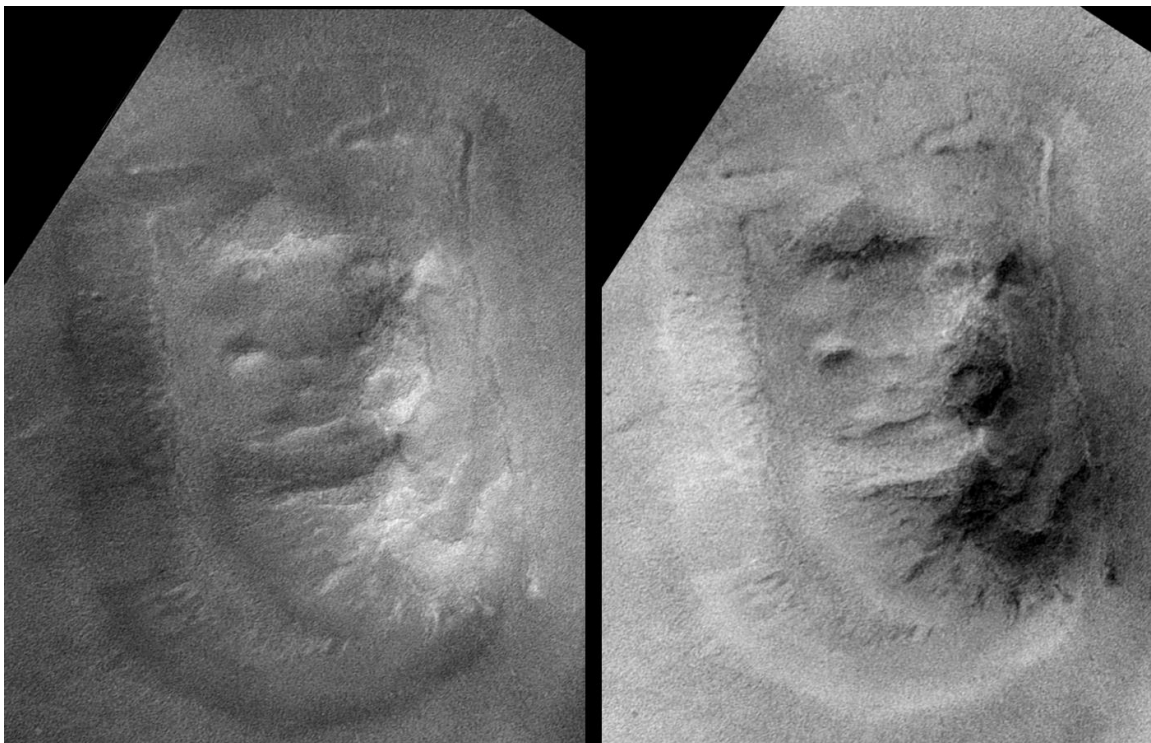


Figure 1

The Face on Mars

Detail of MGS SP122003 (1998)

Left: NASA/JPL enhanced image.

Right: The Cydonia Institute's contrast reversal image.

When the new "Face" is split into two halves and duplicated, Hoagland's anticipated sphinx-like attributes of the Martian "Face" become startlingly evident (Figure 2).

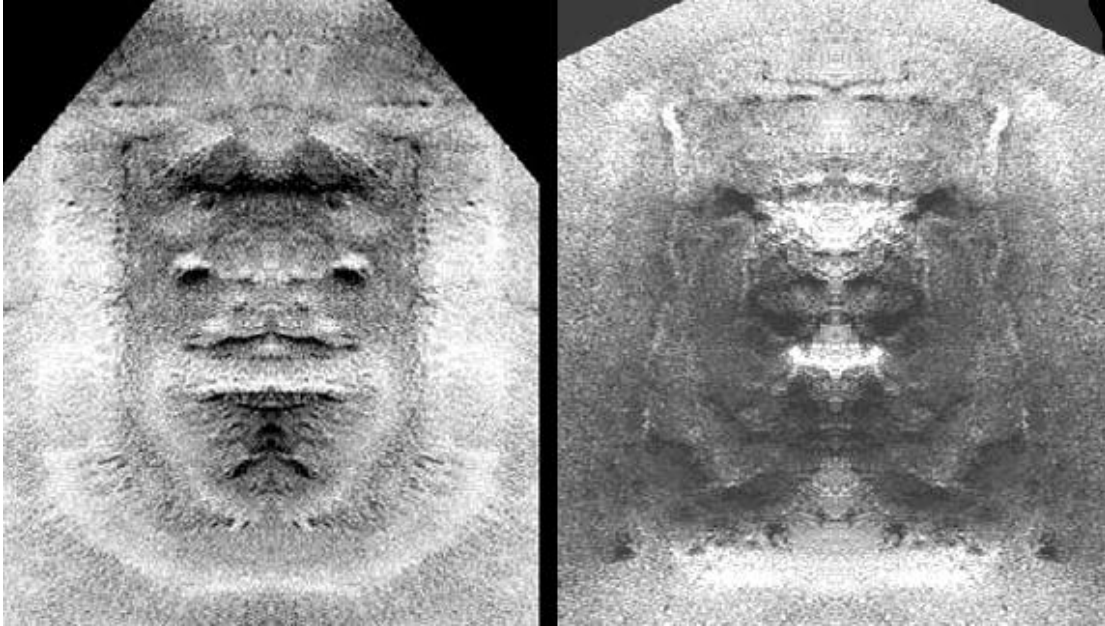


Figure 2

Humanoid and Feline sides of the MGS Face (SP1-22003).
Left: Humanoid Face - Left side duplicated (contrast reversal).
Right: Feline Face - Right side duplicated (contrast reversal).

Notice the eyes, nose, and mouth including two front teeth on the Humanoid side of the Face (Figure 2 - Left). The Humanoid side also has a flanged headdress featuring a "W" shaped emblem. The Feline of the Face has squinting eyes, a muzzle, fangs, a mane, and a crest on the forehead (Figure 2 - Right).

.....

Footnotes

1. Mars Viewer, MOC SP122003, *Mesa and Butte in Cydonia Mensae*, Dated April 5, 1998. <http://viewer.mars.asu.edu/planetview/inst/moc/SP122003#P=SP122003&T=2>