

The Lion Head Profile

by George J. Haas

August 2016 (Revised 2021)

In the summer of 2006 the ESA team released a large expansive view of the Cydonia region (H3253_0000_ND3)¹ that included the famous Cydonia Face on Mars (Labeled A in figure 1). Just below the Cydonia Face is the five-sided D&M pyramid (Labeled B in figure 2) and below that towards the south-western region of the area is a large mesa in the form of a profiled view of a male lion head (Labeled C in figure 1). Interestingly while the north eastern ridge line of the D&M Pyramid points to the "eye" feature of the Cydonia Face, the south western ridge line of the D&M Pyramid points directly to the central "eye" feature of the feline head.

Here is a crop of the ESA image of the mesa, which takes on the form of a right facing lion head, seen in profile (Figure 2). Notice the large pair of ears, the open eye, nose, muzzle and gapping mouth. The combing texture of streaks that flow from the lower portion of the mesa creates a fluffy mane that runs down from along the cliff side. They are also seen below its ear and lower jaw line. The streaks part, just below the chin area, creating a bead.

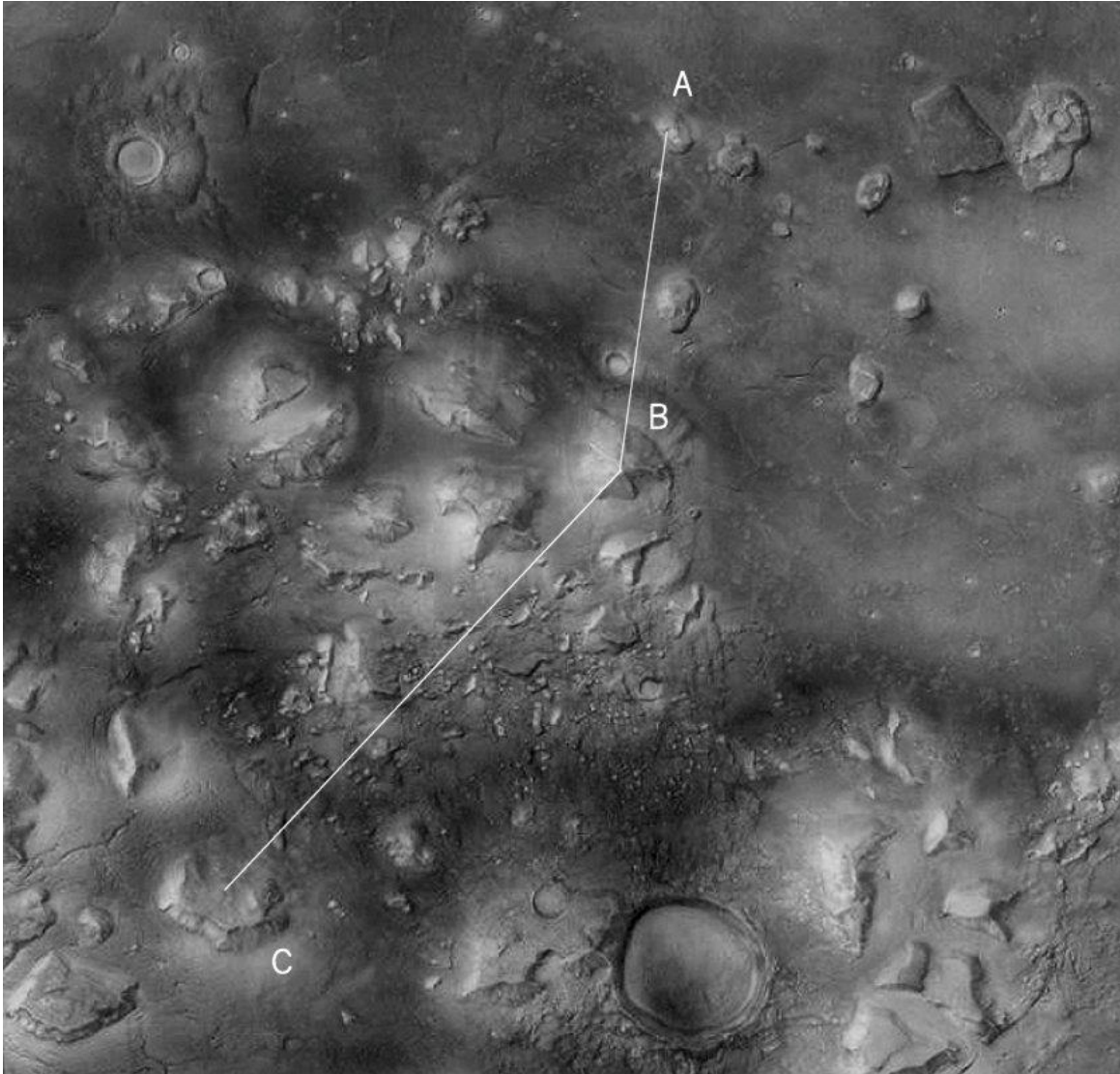


Figure 1 The Cydonia area of Mars. Detail of ESA H3253_0000_ND3 (2006). Notated A-C by the author.



Figure 2 Lion Head Profile. Detail of ESA H3253_0000_ND3 (2006)

A second image of the Lion Head Profile was taken by the Mars Odyssey THEMIS camera during the spring of 2006. The THEMIS image V19209005, was taken in the late afternoon and with a resolution of 18.8 meters per pixel² (Figure 3). The facial features in the THEMIS image are softened by the strong light coming in from the west, while the muzzle and beard are hardened by dark shadows.



Figure 3 Lion Head Profile. Detail of THEMIS V19209005 (2006)

A third image was acquired in the fall of 2006 by the MRO HiRISE CTX camera, in image T01_000807_2205_XN_40N010W. The HiRISE CTX image was taken in the late morning with a resolution of 5.8 pixels per meter³ (Figure 4). The image confirms the large pair of ears, the open eye, nose, the muzzle and gapping mouth. Again we can see the combing texture of the streaks that flow from the lower portion of the mesa, creating a full mane and beard.

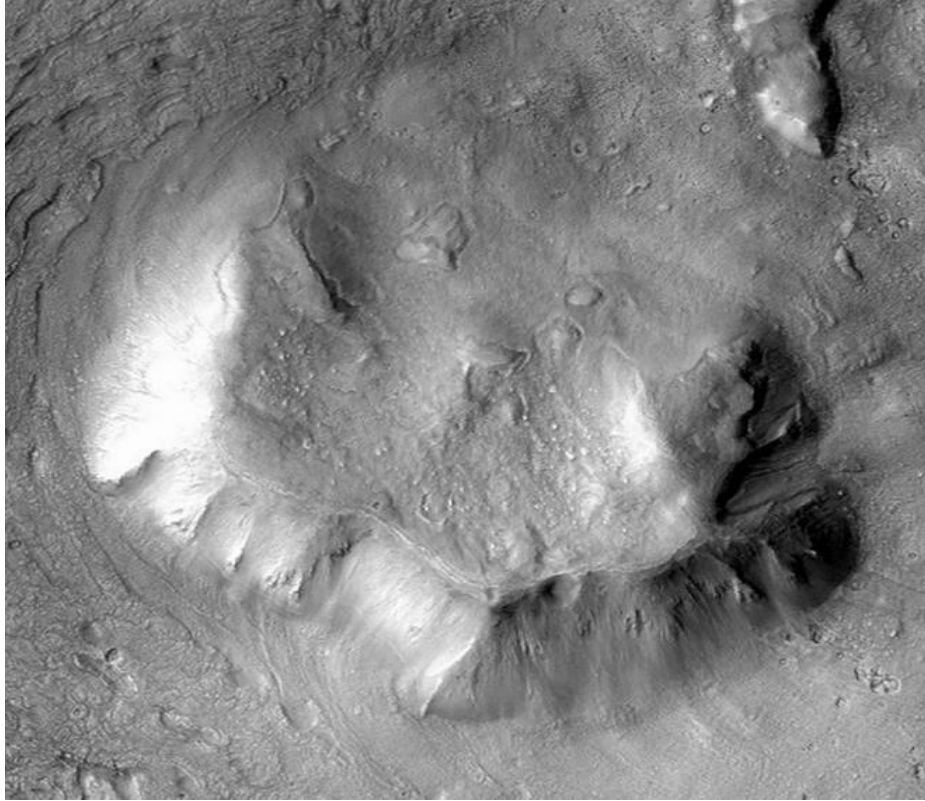


Figure 4 Lion Head Profile. Detail MRO HiRISE CTX T01_000807_2205_XN_40N010W (2006)

An analytical drawing of the Lion Head Profile is provided in figure 5.

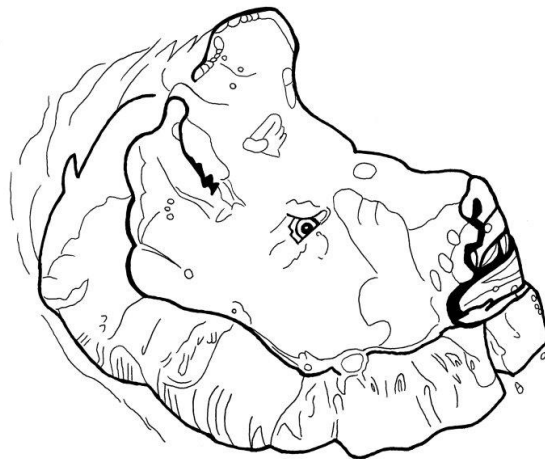


Figure 5 Lion Head Profile. Analytical drawing by the author

THE HUMANOID SIDE

In May of 2016 I send an early draft of this paper to my good friend William Saunders for his review. After a few weeks went by he sent me an image of the Lion Head Profile rotated 90° to the left (east) with a demarcation line running down the center of the head (Figure 6). He demonstrated that when the top half of the Lion Head Profile is duplicated it reveals a frontal view of a human head.⁴

The facial features of the Human Head include a pair of almond-shaped eyes that have a very natural appearance with a distinct eye lid and a dark iris. The almond-shaped eye feature is found, hidden within the ear form of the Lion Head Profile.

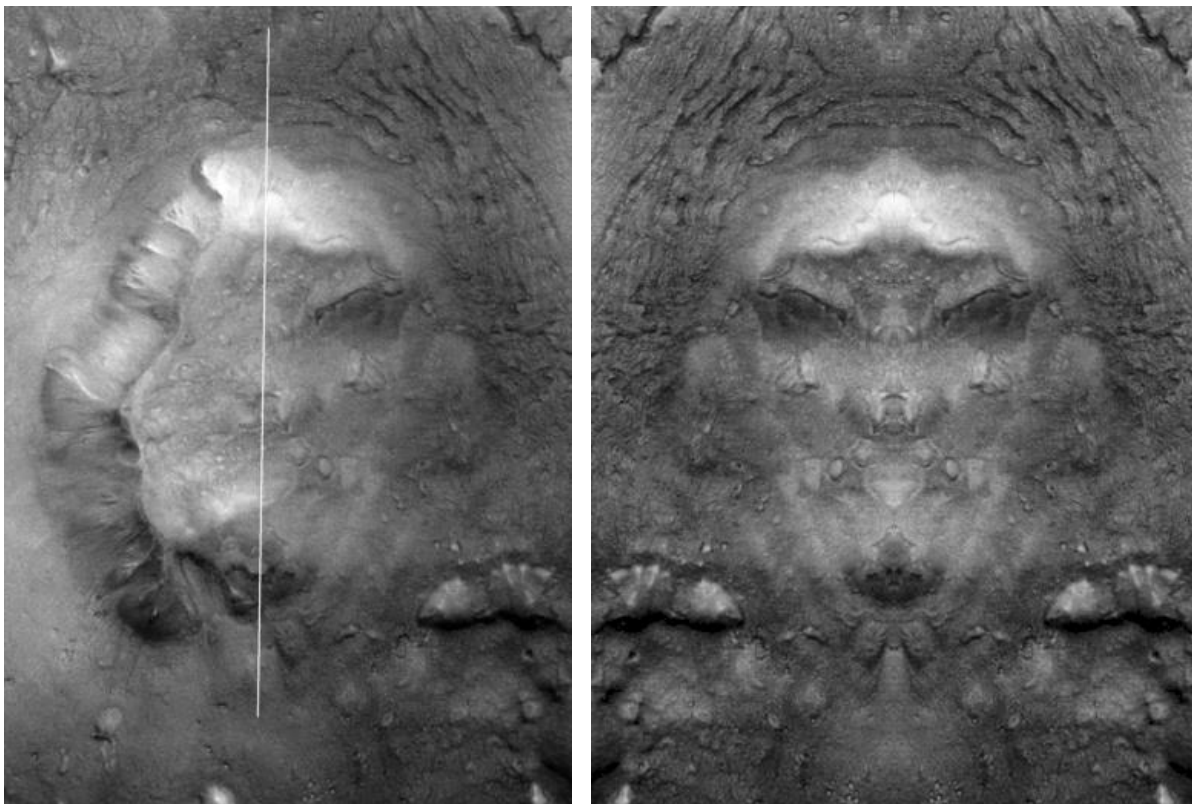


Figure 6 Lion Head Profile with Human Head. Detail of MRO CTX image CTX T01_000807_2205_XN_40N010W (2006). Left: demarcation line. Right: Human Head (duplicated)

Below the human eye is a rectangular formation resting on its cheek bone, like a tear drop. The head is topped with a highly decorative and reflective crown with a shield emblem at its center. The head has two large proportionally sized ears and a broad nose and mouth that are decorated with jewel-like adornments.

Returning back to the ESA image of the Cydonia region in figure 1, which demonstrates that the north eastern ridge line of the D&M Pyramid pointing to the "eye" of the Cydonia Face, which has been shown to be the fusion of a humanoid and a feline face,⁵ Saunders has now revealed that the south western ridge line of the D&M Pyramid points directly to the central "eye" feature of the Lion Head Profile, a geoglyphic structure that also combines a feline and humanoid face. This is quite an amazing demonstration of an architectural mastering of composite – two-faced art.

TERRESTRIAL COMPARISON

The use of facial ornaments and decorative piercings were commonly utilized throughout many of the Mesoamerican cultures. Here are three examples of Pre-Columbian heads with facial ornaments (Figure 7). The first is a carved jade head with a stylized avian headdress and narrow ear flairs. It has a broad nose and wears a highly complex mouth ornament. The second is a composite jade mask with large almond eyes. It has a narrow nose and a wing-shaped, rectangular nose ornament and its mouth is flanked by protruding breath curls. The third example is a head-shaped vessel that looks remarkable like with humanoid head observed within the Lion Head Profile on Mars. Notice the low profiled headdress and the almond-shaped eyes and large ears. It has beaded ornaments on its nostrils and incised lines around its mouth that echo the shape of a dangling nose ring.

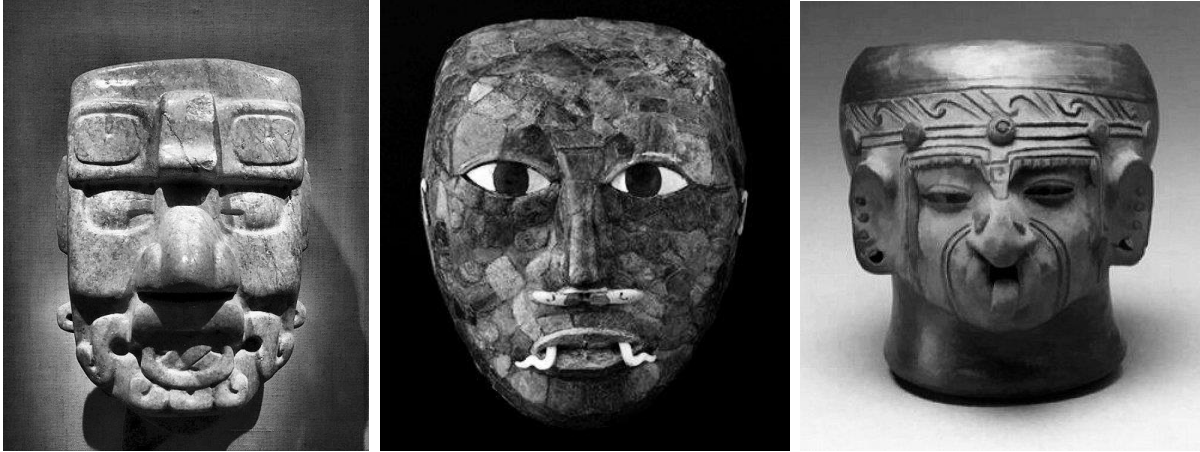


Figure 7 Pre-Columbian Heads with Facial Ornaments

Left: Jade Head, Guatemala

Center: Jade composite mask. Mexico

Right: Ceramic vessel. Ecuador.

I find it quite remarkable that two of the five ridge lines of the D&M Pyramid at Cydonia align with two geoglyphic structures that both feature a visage that combines a human and feline fusion.

.....

Notes:

1. Image explorer, Mars Express HRSC/SRC, H3253_0000_ND3, dated July 22, 2006.
2. Image explorer, Mars Odyssey, THEMIS, V19209005, dated April 14, 2006.
3. Image explorer, *Cydonia Mensae landforms*, MRO HiRISE CTX T01_000807_2205_XN_40N010W, dated September 28, 2006.
4. The Lion Head Profile with the Human Head was presented in William R. Saunders' book, *The Lost World of Earth and Mars*, Tellwell, 2021, 85.
5. William R Saunders and George J. Haas, *The Cydonia Codex, Reflections from Mars*, (Frog Ltd/ Berkeley California), 2005, 11.